

PERRY OUTREACH CENTER

Strengthening households and fostering community well-being in Southwest Detroit through food, health, and education services.

Our Neighbors – an underserved community

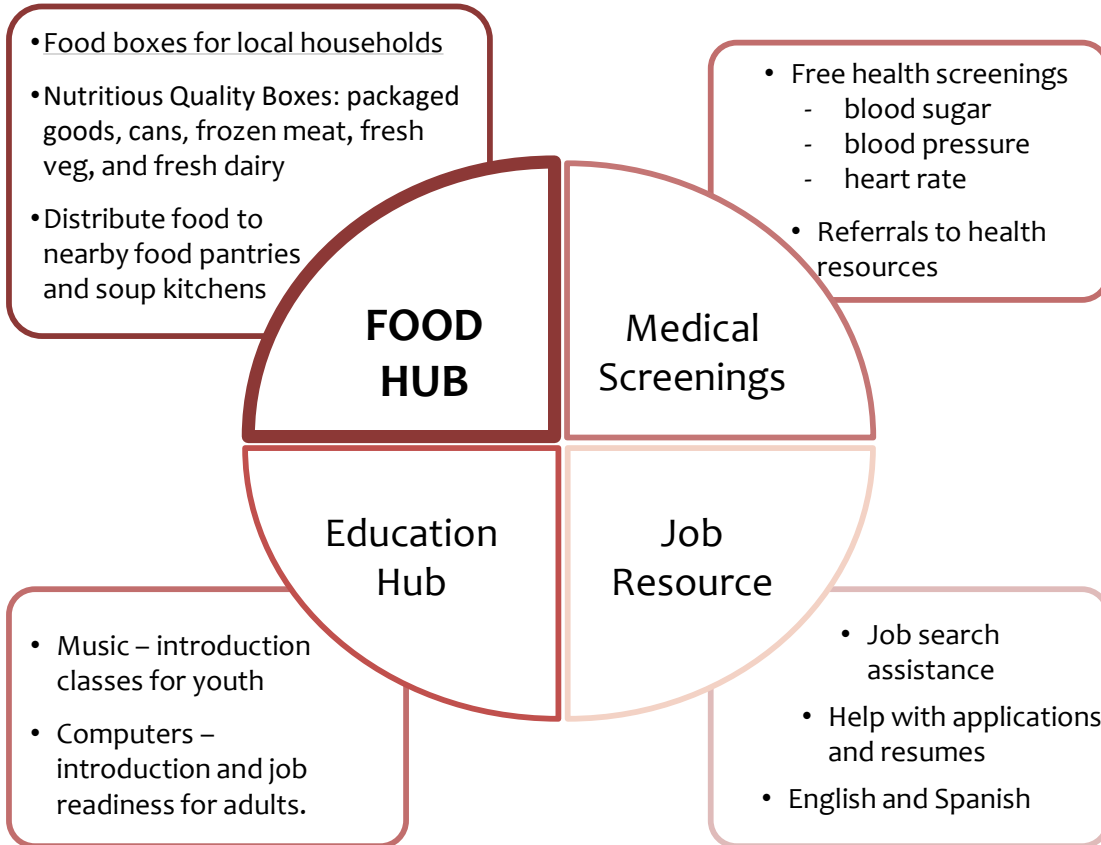
Southwest Detroit's Boynton district (48217 zip) *area is also classified as a food desert, with no grocery stores within the zip code.* Even with about 6,400 residents, there are no social services, no police station, and no medical offices. *These challenges are compounded a lack of robust public transportation access.*



Additionally, this zip code is the most **polluted zip code** in Michigan**. With no medical offices, the need for health services is crucial as is the availability of healthy food.

While our core service area is 48217, we consistently service our neighbors in the bordering communities of River Rouge, Ecorse, Lincoln Park and Melvindale.

WHAT WE OFFER



OUR STORY

Percy and Idella Perry, longtime members of the Saints Andrew & Benedict church in southwest Detroit, built a store in 1958 and were community anchors for decades.

In 2014, they donated the store to the parish, where it ran its food pantry as the Perry Outreach Center.

When the parish closed in 2024, dedicated parishioners and community members formed the independent Perry Outreach Center 501(c)3 non-profit corporation to continue its legacy of service.

OUR TEAM

Director, Randall Mosley – running Perry since 2014, lives in the community
 President, Tracey Patterson – supported Perry and teaching classes since 2015, lives in community
 Key, Rhonda Hanner – with Perry since 2015, taught classes, serve on Board, lives in community
 Board Members – from the community, business owners, volunteers, and from other food pantries



PERRY OUTREACH CENTER
 313 – 749 – 7324
www.perryoutreach.org

12047 Miami St
 Detroit, MI 48217
info@perryoutreach.org

Empowering Individuals and Communities



Food insecurity can have long-ranging consequences

- At the **individual** level, it can lead to malnutrition, chronic diseases, and stunted growth, especially in children.
- For **families**, it can create financial stress, strain relationships, and limit educational opportunities.
- **Communities** affected by food insecurity often experience increased crime rates, lower economic productivity, and a decline in overall well-being.

Our Impact

2023-2024

Food Pantry	Families served: 100+ households each month Over 24,000 pounds of food donated / gifted
Health Screenings	Clients seen: 64 clients for blood pressure, diabetes screenings, and health information (with Madonna University School of Nursing program)
Music Classes	20 students for guitar, keyboard, woodwind, drums
Computer Classes	18 adult students in 4 week sessions learning computer basics
Other	Co-sponsored legal clinic for business with Wayne State Business Law Clinic/Detroit Parks and Rec

Meet Elian*- quick to tell a joke, lives a mile from the Center, and is on disability from years in construction. His checks aren't always enough for rent and prescriptions. Perry Center provides Elian with essential groceries monthly, ensuring nutritious meals and alleviating some stress.



- Some of Our Partners
- Loaves and Fishes
 - Gleaners
 - Marathon Petroleum
 - St. Patrick's Senior Center
 - Madonna U, School of Nursing
 - Knights of Columbus
 - Detroit Area Agency on Aging

HELP US REBUILD

In 2024-25, we are rebuilding this organization. After the church closure in July 2024, the Perry Center is fully-independent 501c3, but starting with \$0, literally.

The Perry Outreach Center is more than just a service provider; we are a cornerstone of the Boynton neighborhood and surrounding areas.

We run a lean operation—powered by volunteers and donations—and our resources do not go to bloat.

The support we receive enables us to continue our critical work and expand our reach.

Program Expenses

1. Food Pantry
2. Health Screening
3. Music Classes
4. Computer Classes

Operation Expenses

- Building costs (repairs, utilities, etc)
- Equipment (freezers, copier, etc)
- Staff
- Insurance
- Office supplies

GET INVOLVED

Donate	Financial contributions allow us to purchase food, fund our programs, and keep the lights on.	online – perrycenter.org/donate mail – 12047 Miami, Detroit MI 48217
Volunteer	Food pantry assistants, office workers, social media, music tutors, computer tutors—call us!	call – 313-749-7324 email – info@perryoutreach.org
Partner	Partner with us to provide resources, support our various programs, or reach the community	call – 313-749-7324 email – info@perryoutreach.org
Visit us	Come take a tour!	call – 313-749-7324 email – info@perryoutreach.org



PERRY OUTREACH CENTER
313 – 749 – 7324
www.perryoutreach.org

12047 Miami St
Detroit, MI 48217
info@perryoutreach.org